

**CERTIFIED LAND CORNER RECORDATION**

DESCRIPTION OF CORNER EVIDENCE FOUND, AND ORIGINAL RECORD (If known)

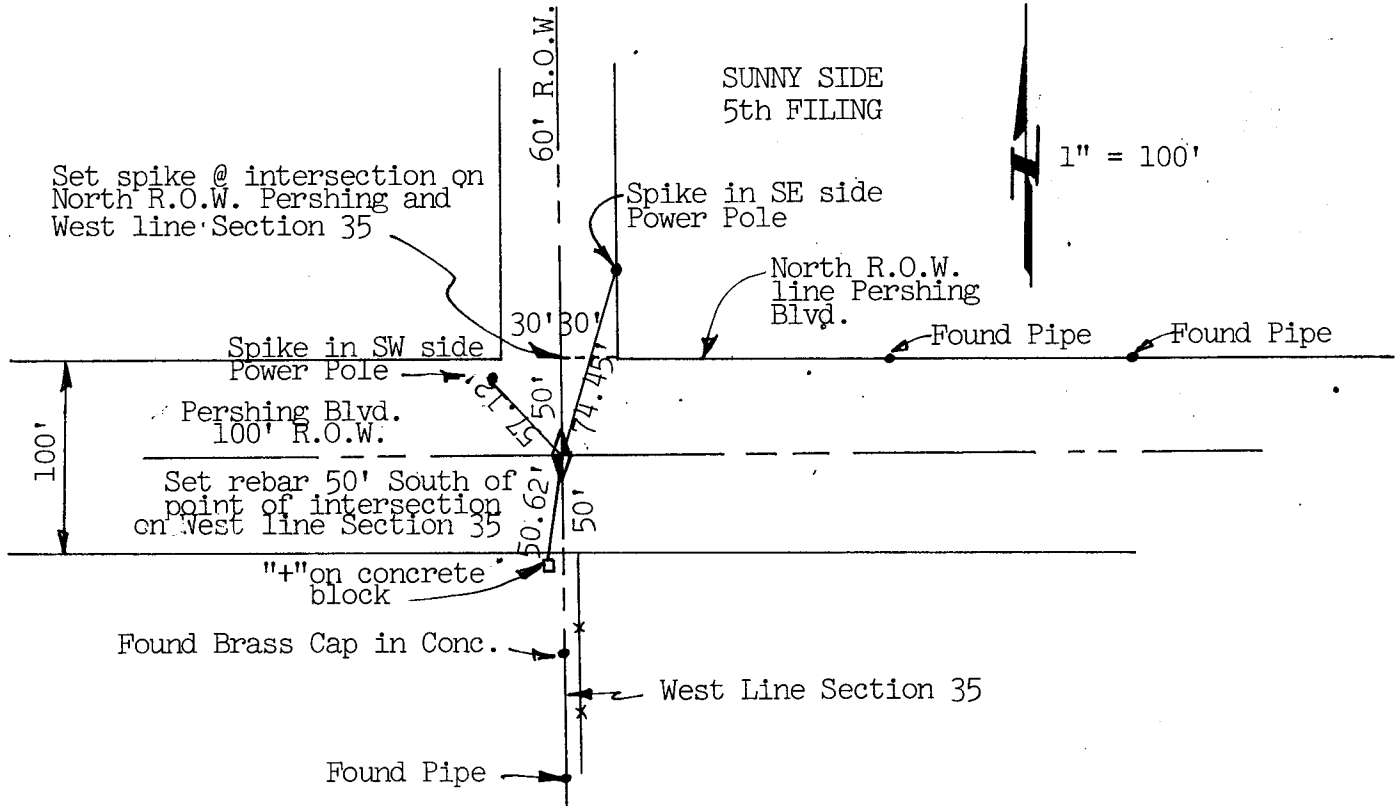
DESCRIPTION OF MONUMENT AND ACCESSORIES ESTABLISHED  
TO PERPETUATE THE ORIGINAL LOCATION OF THIS CORNER:

Location  
Sec 27 | Sec 26  
Sec 34 | Sec 35

Set a 3/8" rebar flush with the asphalt from ties to corner platted in Sunny Side 5th Filing.

Township 14 N Range 66 W  
6th P. M.

SKETCH, WITH COURSE AND DISTANCE TO ADJACENT CORNER IF DETERMINED IN THIS SURVEY.  
(May Sketch or Paste Reproduction on Reverse Side.)



I, S. D. Dawson certify that I have carefully ~~performed~~ or reviewed the work done on the diagrammed corner as reported on this recordation form and approve the same.

[Signature] Wyoming R.L.S. # 555  
Signature of Surveyor Registration No.

STATE OF WYOMING,  
Office of Clerk and Recorder,  
County of Taramie

This "corner record" was filed for record on the 16 day of August, 1974, was noted on the cross-index plat and is assigned page No. \_\_\_\_\_, in book No. \_\_\_\_\_.

[Signature]  
County Official

Cross Index No. <u>V-17</u>	T. <u>14</u>	R. <u>66</u>	<u>6</u> Mer.
_____	T. _____	R. _____	Mer.
_____	T. _____	R. _____	Mer.
_____	T. _____	R. _____	Mer.
_____	T. _____	R. _____	Mer.
_____	T. _____	R. _____	Mer.
_____	T. _____	R. _____	Mer.